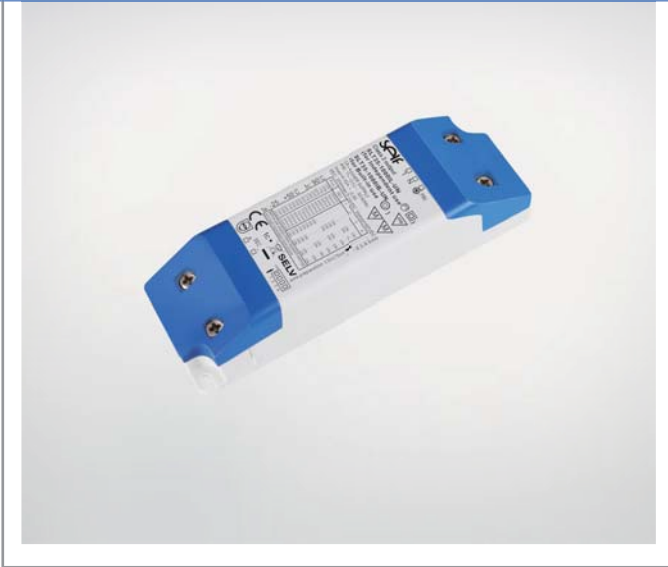


# Constant Current LED Power Supply

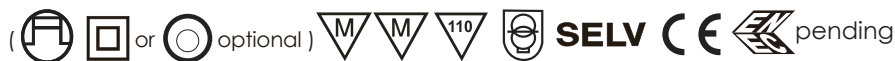
SLT35-1000IB-UN(for build-in use)

SLT35-1000IL-UN(for independent use)



## Product description :

It is designed for built in application with compact size. The out put current can change from 250mA to 1000mA by dipswitch. The current step is 50mA. It meets SELV standard of preventing electric shock. Open circuit, short circuit, over load and over temperature Protection enhance the safety in processing. It has optional fitting to transform as independent use.



## Standards:

EN61347-1  
EN61347-2-13  
EN61547  
EN55015  
EN61000-3-2  
EN61000-3-3  
EN62384  
EN62493  
UL 1310  
UL 8750

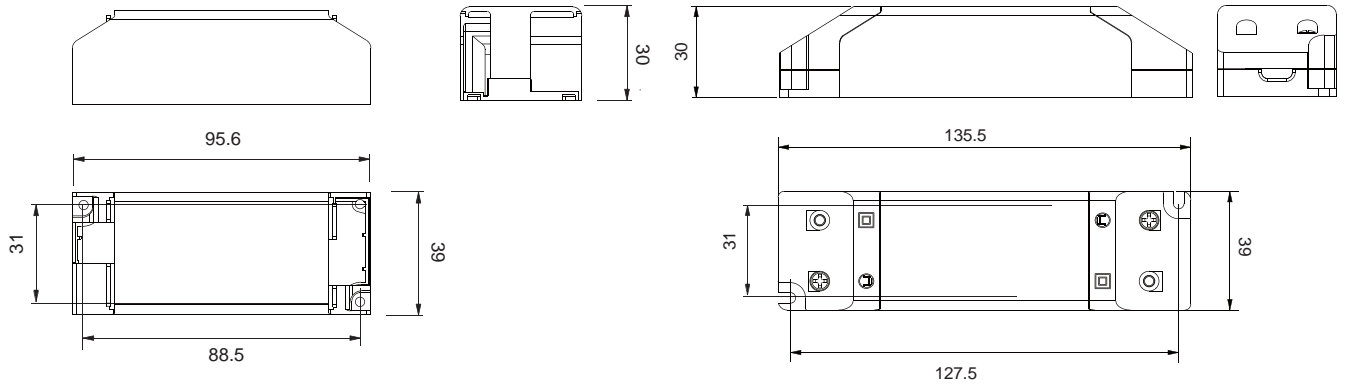
## Characteristics:

- Built in use design(optional for independent use)
- SELV output(<60V)
- Open circuit,short circuit,over load and over temperature protection.
- Auto restart after fault conditions removal
- Free flicker design
- Life time: 50,000h(ta=50 C)
- Warranty:5years

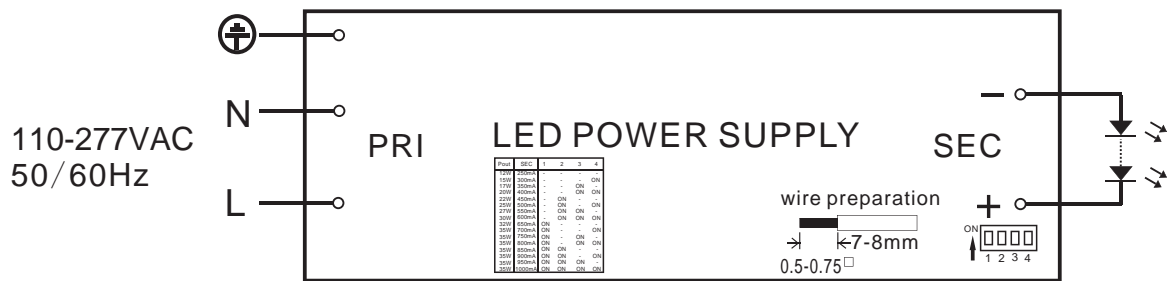
## Specifications:

Model	SLT35-1000IB-UN(for build-in use) SLT35-1000IL-UN(for independent use)	
Output	turn on time(S) <sup>1</sup>	<0.5s
	output current(mA) <sup>1</sup>	250/300/350/400/450/500/550/600/650/700/750/800/850/900/950/1000
	output current tolerance <sup>2</sup>	+/-5%
	ripple current(%) <sup>3</sup>	≤3%
	working voltage range(V)	2-50(250/300/350/400/450/500/550/600/650/700) / 2-35(750/800/850/900/950/1000)
	output power range(W)	0.5-35
	Max. output voltage(V)	60
	output safety rating	SELV
	dimming interface	No
	dimming range	n/a
Input	rated supply voltage(Vac)	110-277
	voltage range(Vac)	100-305
	line frequency(Hz)	50/60
	input current(mA)	0.42A @110Vin/0.20A @230Vin
	input power(W) <sup>1</sup>	41W Max
	efficiency <sup>1</sup>	≥87%@full load
	power factor <sup>1</sup>	≥0.95(Refere to Electrical curves)
	THD <sup>1</sup>	<15%@120V <10%@230V@full load any current presetting
	inrush current(Ipk) <sup>1</sup>	20A
Protection	short circuit protection	YES
	over temperature protection	YES
	automatic restart	YES
	over load protection	YES
	surge capacity	L-N: 2kV; L,N-PE: 4kV
Ambient and Life	Ta(°C)	-25...+50
	Tc max. (°C)	90
	nominal life-time(hrs)	50'000@Ta=45°C
	guarantee(years)	5
	MTBF(hrs)	100'000@25°C
	Storage Temperature(°C)	-30...80
	ambient humidity range	5%...85%RH, Not condensing
	audible noise(dB)	30dBA tested@10cm
Other	weight(g)	160
	dimensions (LxWxH)(mm)	95.6x39x30/135.5x39x30
	casing material	Plastic
	housing colour	Grey+blue end cap
	connecting method	insert type terminal
	type of protection	IP20
	protection class	ClassII for EU,class 2 for UL
Note	1. At 230Vac,50Hz,full load. 2. Tolerance:includes set up tolerance,line regulation and load regulation. 3. At 230Vac,50Hz,LED load,blew 200Hz	

**Dimensions(mm):**



**Wiring diagram:**

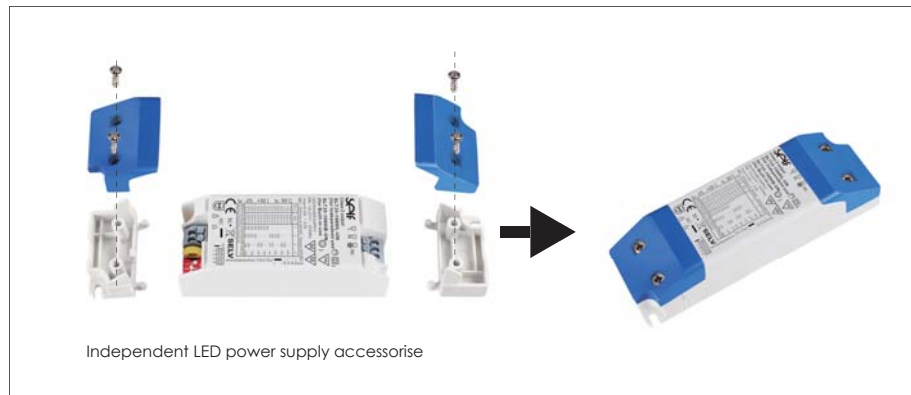


**Application:**

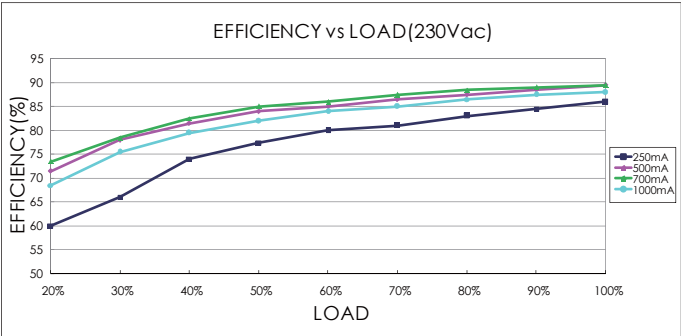
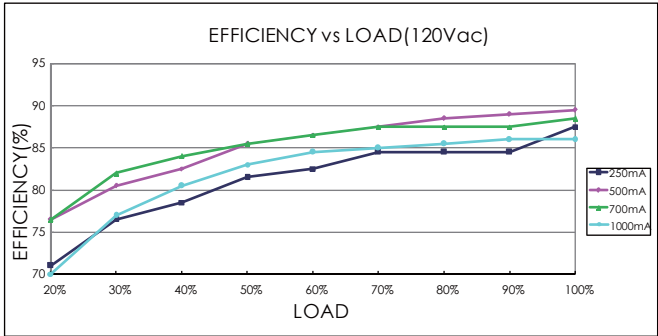
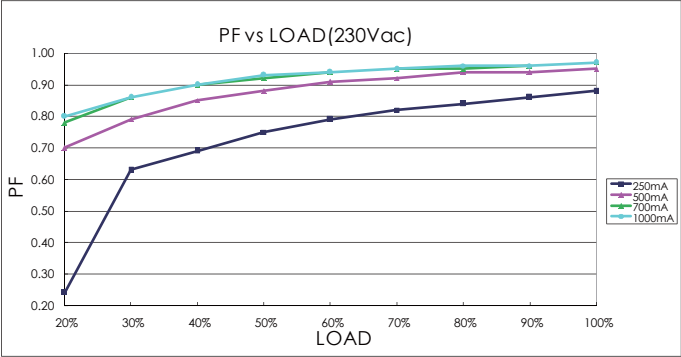
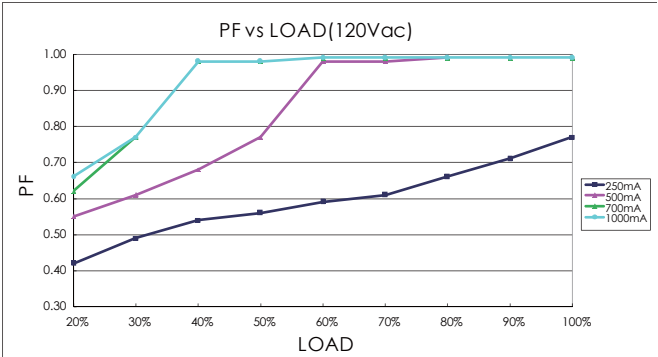
Built-in application



Independent application



### Electrical curves:



note  
For constant current power supply,"LOAD" means the percentage of the maximum rated output voltage.  
For constant voltage power supply,"LOAD" means the percentage of the maximum rated output current.

## Sales & Technical Support:

### **Self Electronics Co.,Ltd.**

Add: No. 1345 Ju Xian Road, Ningbo Hi Tech Park, Ningbo, China

Tel: 0086-574-28805765,28805658(For English Assistance)

0086-574-28805678 (For Chinese Assistance)

Fax: 0086-574-28805656

E-mail: sales@self-ecg.com

<http://www.self-ecg.com>

### **Self Electronics Co.,Ltd.,Shenzhen Office**

Add: Room2007,Xinglang Xuan,Xinghe Mingju,Fuming Road,Futian District,Shenzhen

Tel: 0086-755-83558850, 83558851

Fax: 0086-755-83558840

### **SELF ELECTRONICS GERMANY GMBH**

Add:August-Horch-Str. 7,51149 Koeln

Tel: 0049 2203 18501-0

Fax: 0049 2203 18501-199

E-mail: saleseu@self-electronics.com

\*Due to continuous improvements and innovations,specifications are subjected to change without notice.